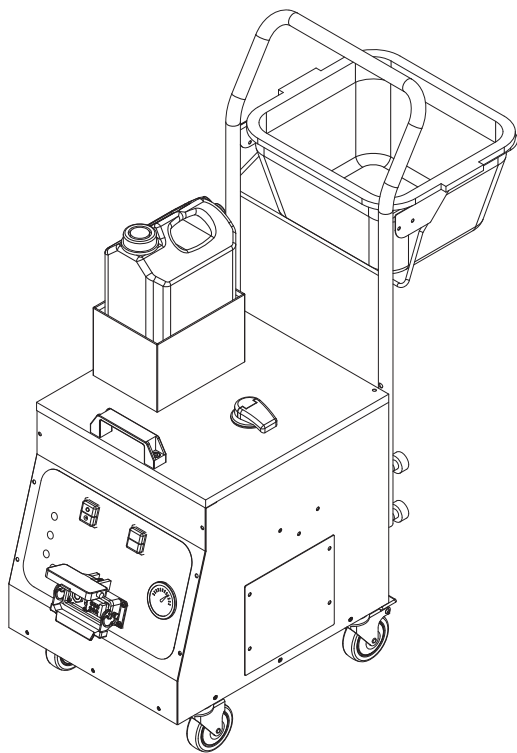


APX1550

US OPERATION MANUAL & MAINTENANCE GUIDE



APX1550 Steam Generator



APEX STEAM TECHNOLOGIES

30 INDEL AVE · PO BOX 227 · RANCOCAS NJ · 08073

WWW.APEXSTEAM.COM

Phone: 609-267-0922 · Fax: 609-261-2546



BEFORE USE, CAREFULLY READ THIS MANUAL AND FOLLOW ALL SAFETY INSTRUCTIONS.

NOTES:

MAINTENANCE LOG

DATE	NAME	COMMENTS
------	------	----------

DATE	NAME	COMMENTS
------	------	----------

DATE	NAME	COMMENTS
------	------	----------

DATE	NAME	COMMENTS
------	------	----------

DATE	NAME	COMMENTS
------	------	----------

DATE	NAME	COMMENTS
------	------	----------



TABLE OF CONTENTS



Introduction page 5



Safety Instructions..... page 6
Disposal..... page 8



Technical Specifications..... page 9



START UP, Set-up and Use page 13-14



OPERATION..... page 13-14



Accessories page 16



Maintenance page 19



APEX STEAM TECHNOLOGIES

30 INDEL AVE · PO BOX 227· RANCOCAS NJ · 08073
WWW.APEXSTEAM.COM
Phone: 609-267-0922 · Fax: 609-261-2546



BEFORE USE, CAREFULLY READ THIS MANUAL AND FOLLOW ALL SAFETY INSTRUCTIONS.



THE BOILER MUST BE DESCALED PERIODICALLY ESPECIALLY IN AREAS WHERE HARD WATER IS PREVALENT. SEE PAGE 19 IN THIS MANUAL FOR INSTRUCTIONS.

SYMBOLS



CAUTION: Important safety Instructions!



READ the entire user manual before start up



Before any maintenance, always **disconnect the power supply**.



Carefully follow the instructions for **maintenance** as described in the user manual



CAUTION: Machine is energized!



CAUTION: Hot parts!



CAUTION: Use protective gloves!



1 - INTRODUCTION



For your safety, please carefully read the instructions before using the machine and follow the guidelines below:

Please Read and Retain this Manual

Congratulations on choosing the APX1550. We are sure that if you carefully follow the information included in this manual, you will appreciate the quality of our product. Please carefully read this manual and have it read by anyone that will use this machine.

- The instructions concerning the operation and maintenance of the machine included in this manual describe the detailed use of the machine ONLY for its intended purpose.
- This manual, provided with the unit must be **RETAINED FOR ANY FUTURE REFERENCE** until the machine is dismantled.
- The manual must always be available to anyone operating the machine.
- If the manual is lost or damaged, the user must ask the manufacturer for a new manual. Please Specify: **SERIES- MODEL- YEAR OF CONSTRUCTION- SERIAL NUMBER** as visible on the rear panel of the machine.
- The manufacturer reserves the right to update and modify the generator without having to update the previous manuals.
- The manufacturer will not be responsible for any direct or indirect damage due to any improper use of the machine for example:
 - Failure to perform required maintenance.
 - Any modification not authorized by the manufacturer.
 - Use of non-original spare parts and parts not specified for the model of machine.
 - Noncompliance with the instructions.
 - Extraordinary events or natural disasters



THE BOILER MUST BE DESCALED PERIODICALLY ESPECIALLY IN AREAS WHERE HARD WATER IS PREVALENT. SEE PAGE 19 IN THIS MANUAL FOR INSTRUCTIONS.



2 - SAFETY AND WARRANTY



IMPORTANT. KEEP THIS USER MANUAL IN A SAFE PLACE FOR FUTURE REFERENCE.

The machine is designed and built for the sole purpose of cleaning and sanitation using steam.

IMPROPER USE

Use for purposes other than specified above is considered as improper use.

The machine must not be used in areas classified as potentially explosive. Refer to the section entitled "**Important Notes**" for further details.

Full compliance with the operating and maintenance instructions is necessary. Improper use of the machine, besides being hazardous for the user and other people, will likely damage the machine and will void the warranty.

BEFORE OPERATION

- Read the instructions carefully before operating the machine.
- Any use not in accordance with these instructions will void the warranty.
- The electrical installation must comply with ALL applicable laws and codes.
- Do not expose the machine to extreme temperatures. The operating temperature range is 41°F to 104°F.
- Before connecting the machine, make sure the main voltage corresponds to the voltage listed on the machines plate, and ensure the power outlet is grounded.
- Unplug the machine when not in use.
- Never leave the machine unattended when it is connected to the power supply.



• Always disconnect the plug before any maintenance operation.

- Do not pull on the power cord to disconnect the plug. Always grasp the plug.
- Do not allow the cord to get twisted, crushed or stretched.
- Do not allow it come into contact with sharp items or heated surfaces.
- Do not use the machine if the power cord or other important parts are damaged.
- Do not use extension cords as this could cause damage or a fire.
- If the power cord needs to be replaced, contact **APEX STEAM**.
- Never touch the machine with wet hands or feet when it is plugged in.
- Do not use the machine in the vicinity of sinks, baths, showers or other areas of water.
- Never immerse the machine, cord or plug in water or other liquids.
- Do not use the machine in places where there is the risk of explosion.
- Do not use the machine in the presence of toxic substances.
- Do not position the machine close to gas burners, rings, electric stoves or other sources of heat.
- Never allow the machine to be operated by children or anyone not specifically trained to do so.
- Do not press the buttons with excessive force.
- DO NOT use pen tips or other pointed instruments to press any buttons.



- Always use the machine on a flat, stable surface.
- If the machine shows any signs of damage, refrain from using it and have it checked at an Authorized Service Center.
- In the event of a fault or malfunction, switch the machine off immediately. Do not attempt to repair. Contact an Authorized Service Center.
- Original spares must always be used for repairs or replacements. This is to ensure the machine continues to operate safely.
- Before filling with water, remember to switch off the machine and disconnect the power plug.
- Make sure the machine is kept horizontal during operation.
- Do not direct the jet of steam towards electrical or electronic equipment.
- Let the machine cool down before cleaning it.
- Make sure the machine has cooled before storing.
- The safety devices must only be replaced by an Authorized Technician.
- Never direct the jet of steam towards people, animals or debris.
- Keep your hands clear from steam output.
- Do not place detergent or other chemical substances inside the boiler.
- Water contains magnesium, mineral salts and other substances that can lead to the formation of scale. Your boiler must be descaled periodically. See page 19.



- **Wear safety goggles and protective clothing.**

- This machine is not suitable for use by children.
- Children must not play with the machine.
- **CORRECT USE OF THE MACHINE.**

This machine is intended for domestic use as a steam generator in accordance with the instructions provided in this handbook. Please read the instructions carefully and keep the handbook in a safe place for future reference. The MANUFACTURER & DISTRIBUTOR DECLINE ALL LIABILITY for damage or injury caused by failure to use the machine in accordance with these instructions.



THE BOILER MUST BE DESCALED PERIODICALLY ESPECIALLY IN AREAS WHERE HARD WATER IS PREVALENT. SEE PAGE 19 IN THIS MANUAL FOR INSTRUCTIONS.



3 - DISPOSAL

The machine must be disposed of in accordance with any federal, state or local laws that pertain to the disposal of electric and electronic appliances, or pressure vessels.



4 - TECHNICAL SPECIFICATIONS

• DESCRIPTION OF THE MACHINE:

This industrial high pressure and high temperature electric steam generator is designed for cleaning and sanitizing multiple surfaces and a variety of equipment.

It can generate dry saturated steam at very high temperature for a deeper and more effective cleaning. This steam generator can also provide dry saturated steam mixed with hot water, thanks to a brand new design.

The many accessories included allow for easy use of the machine for cleaning a variety of items and areas.

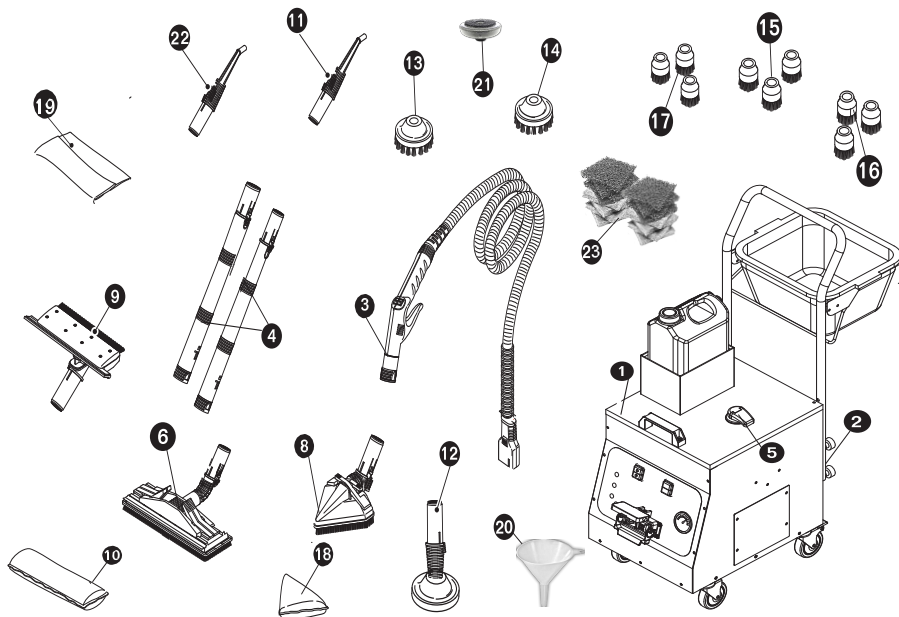
• MACHINE SAFETY FEATURES:

- Pressure relief valve
- Pressure gauge
- Safety thermo-regulator/temperature control

DESCRIPTION		
MODEL	APX1550 120V	APX1550 220V
CODE	IND0310	IND0310
STAINLESS STEEL 304 STRUCTURE	YES	YES
POWER SUPPLY V/HZ	110/60	220/60
POWER WATTS	1650	2000
POWER REDUCTION	/	/
AMPS	14	10
WORKING PRESSURE PSI- ADJUSTABLE	100	100
WORKING TEMP	338	338
STAINLESS STEEL 316 BOILER CAP GAL	.58	.58
STEAM HOSE LENGTH FT	11	11
OUTPUT STEAM VOLUME lbs/hr	8.8	9.5
CAPACITY OF WATER TANK GALS	1.32	1.32
CAPACITY OF DETERGENT TANK GALS	1.32	1.32
ELECTRONIC CONTROLS	YES	YES
POWER CORD LENGTH	15	15
ALL DIMS ARE IN INCHES		
LENGTH (WITH HANDLE)	24	24
WIDTH	15	15
HEIGHT (MACHINE ONLY)	21	21
HEIGHT (WITH HANDLE)	40	40
NET WEIGHT lbs	45	45
GROSS WEIGHT lbs	60	60
STANDARD ACCESSORY RACK INCLUDED	YES	YES

**Whats included with the APX1550**

Fig. 1



- | | |
|--|---|
| 1 The APX1550 | 13 Circular brush with bronze bristles 2.5" (1pc) |
| 2 Power cord | 14 Circular brush with nylon bristles 2.5" (1pc) |
| 3 Flexible hose | 15 Circular brush with steel bristles 1" (3pc) |
| 4 Extension tubes | 16 Circular brush with bronze bristles 1" (3pc) |
| 5 Safety/filler cap | 17 Circular brush with nylon bristles 1" (3pc) |
| 6 Multi-function brush | 18 Triangular brush pillow insert |
| 8 Brush for padded products
(sofas, carpets, car seats, etc.) | 19 White terrycloth towels (6pc) |
| 9 Squeegee brush | 20 Water tank-filler funnel |
| 10 Rectangular pillow insert | 21 Circular scrub pad holder 2.5" (1pc) |
| 11 Black steam nozzle | 22 Gray steam nozzle |
| 12 Drain Tool | 23 Assorted scrub pads 2.5 x 2.5" (12pc) |

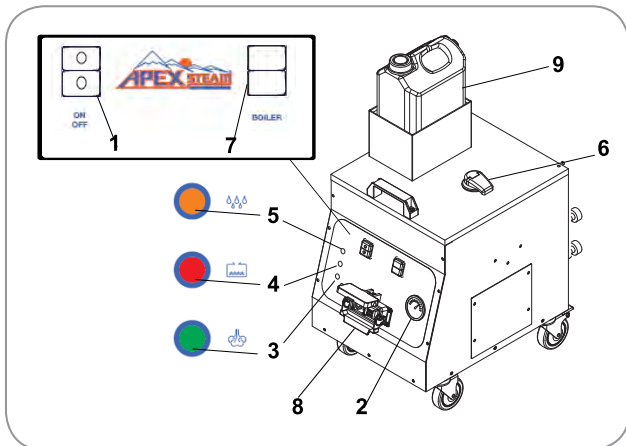


5 - PREPARATION AND USE

MAIN CONTROLS

Fig. 3

- 1 -Main switch
- 2 -Pressure gauge
- 3 -Steam ready indicator
- 4 -Low water indicator
- 5 -Detergent supply pilot light
- 6 -Water tank / FILL CAP
- 7 -Boiler main switch
- 8 -Hose connection
- 9 -1/2 gal spare water jug or detergent container



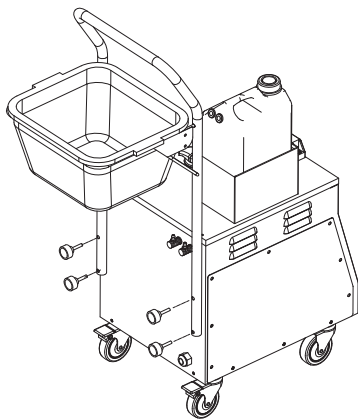
Handle installation.

Insert the handle on the supporting structure of the machine (Fig. 4)

Secure the handle to the structure using the two fixture points and the mounting bolts provided.

(Fig. 4)

Fig. 4





SET UP AND USE

Start-up:

Turn on the main switch (1, Fig. 6). Turn on the boiler switch (7, Fig.6). The green light (3, Fig. 6) comes on when the operating pressure is reached.

No water inside the tank will trigger flashing of the indicator light(2) and an intermittent audible signal. Fill the tank to continue use.

After filling the tank the machine will return to normal operation.

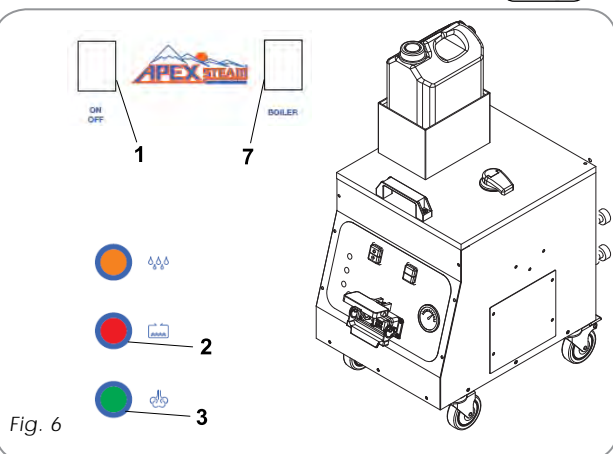


Fig. 6

STEAM-DETERGENT DELIVERY:

Press the detergent delivery button (4, Fig. 7).

The controls on the handle can be operated together to deliver detergent as well as steam, in which case the light (5, Fig.7) will come on.

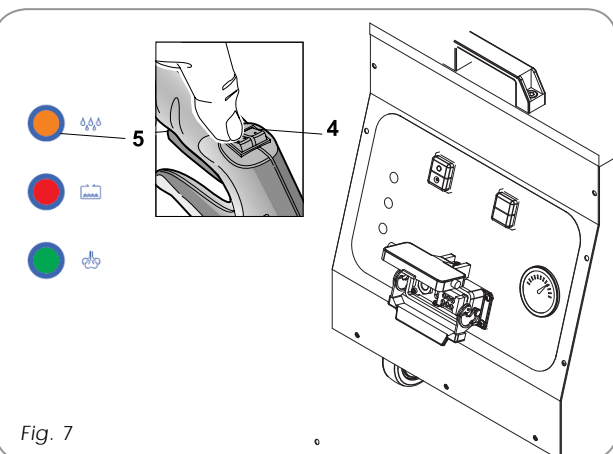


Fig. 7

Gauge (fig. 8)

A pressure gauge is located on the control panel.

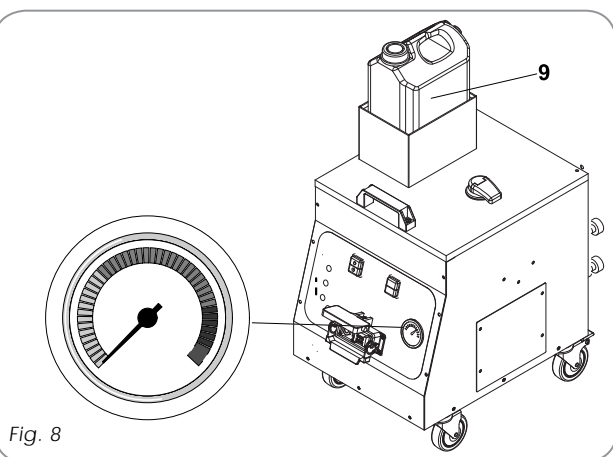


Fig. 8





6 - OPERATION

FIRST FILL-UP:

- If the boiler and tank are completely empty, all system functions are disabled.
- Check for water in the tank, and fill it if empty.
- With the tank full and the boiler empty, the system will activate the water pump to fill the boiler to the correct level. During this phase the heater is deactivated.



IMPORTANT!

WHEN THE RED "WATER TANK EMPTY" LIGHT COMES ON, NO MORE STEAM WILL BE DELIVERED UNTIL THE TANK HAS BEEN REFILLED.



IMPORTANT! DO NOT USE DISTILLED OR DE-MINERALIZED WATER

REFILLING BOILER:

- Refilling is carried out each time the level probe senses a low water level in the boiler. During water level recovery, the heater remains enabled for heating.



IMPORTANT!

Use the steam gun to discharge any residual air in the boiler during initial heating cycle.

ONBOARD WATER TANK:

- Each time the WATER TANK level probe senses a low water level, the boiler immediately stops operation and the signal light (4 fig.3) starts blinking together and an intermittent audible signal is triggered.
- To reset the alarm, switch off the machine and disconnect the plug. THEN refill the tank to reset the alarm.

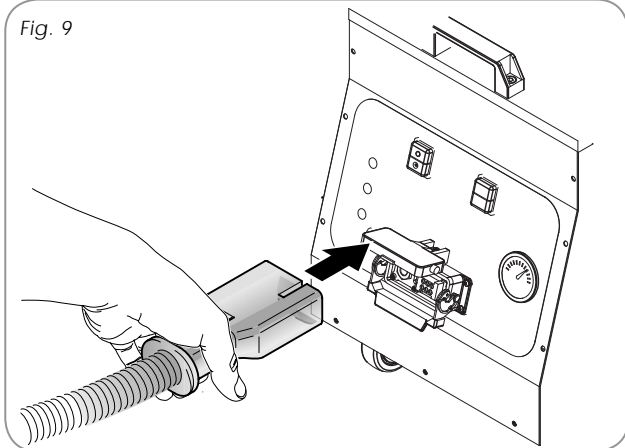


THE BOILER MUST BE DESCALED PERIODICALLY ESPECIALLY IN AREAS WHERE HARD WATER IS PREVALENT. SEE PAGE 19 IN THIS MANUAL FOR INSTRUCTIONS.



Open the cover of the hose connection on the machine's front panel, and insert the hose making sure that it is properly inserted and firmly connected (Fig. 9).

Fig. 9



NEVER use the hose to pull the machine (Fig.10).

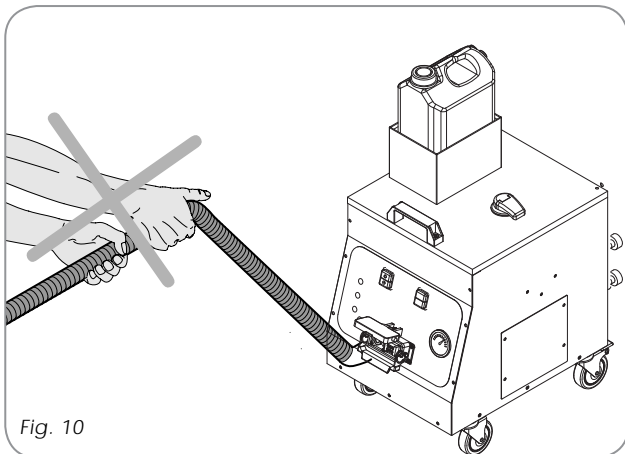


Fig. 10

To move the machine push from back using the handle as shown in Fig. 11.

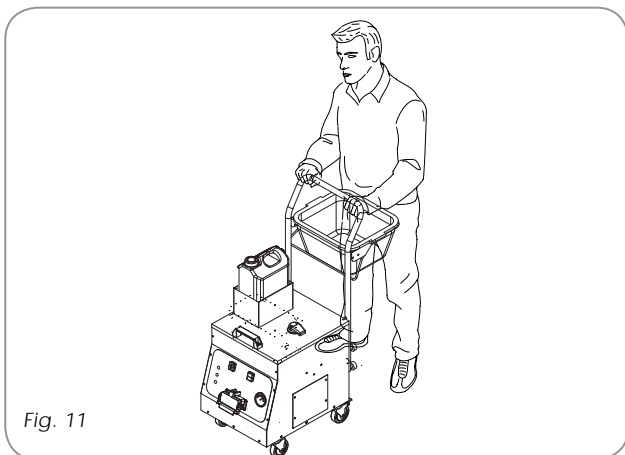
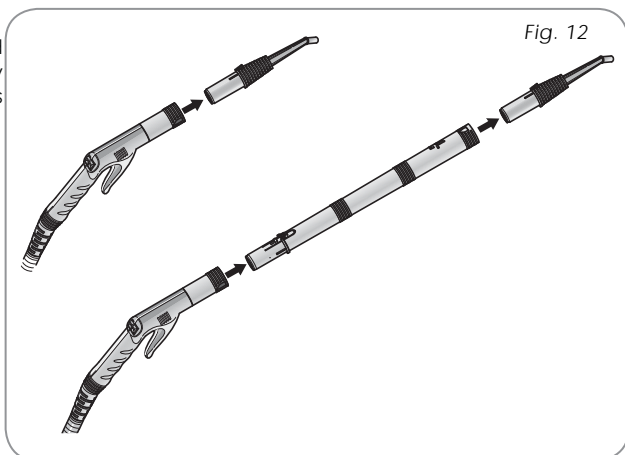


Fig. 11



All the accessories provided can be attached simply by inserting the two ends, as shown in **Fig.12**.

Hint: Listen and feel for a "click"

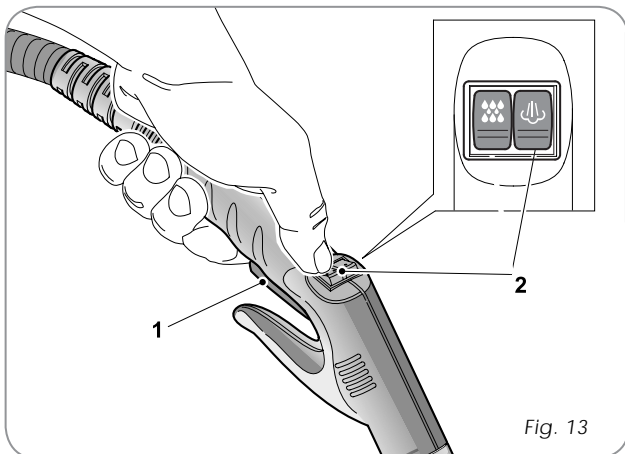


Steam control

Operate the lever (1) on the steam gun to deliver steam. Steam delivery will cease when the lever is released (Fig. 13). Press the buttons (2) to select steam output level.



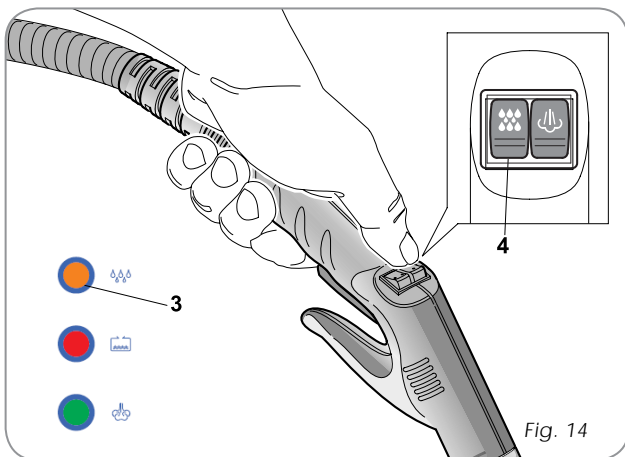
To avoid burns, NEVER direct the jet of vapor towards people or animals.



Steam/detergent delivery control

Press the button (4) on the gun to activate/deactivate detergent delivery together with the steam.

Detergent and steam are delivered together and the light (3, Fig. 14) on the control panel will come on.





7 - ACCESSORIES

Mounting the accessories.

All the accessories provided can be attached simply by inserting the two ends, as shown in (Fig. 15).

Hint: Listen and feel for a "click"

Fig. 15



BRUSHES

Brushes can be installed on the hose handle or on the tubular extensions.

The square brush is usually used to clean floors and other large flat surfaces.

The brush is equipped with a lever allowing the handle to rotate. (Fig.16.)

Four clamps on the top of the brush allow a cloth to be affixed and secured.

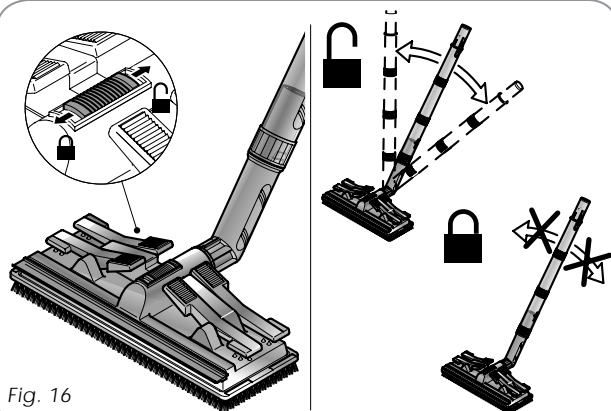


Fig. 16

Rotating triangular brush

The rotating triangular brush has softer, more flexible bristles.

This brush is used to clean smaller and delicate surfaces like armchairs, fabrics, pleats and seams in fabrics

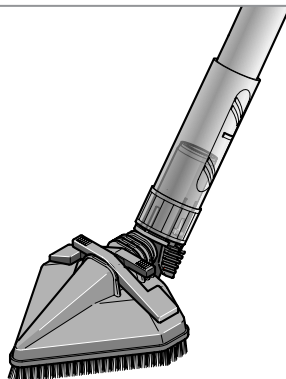


Fig. 17



LANCES

Nozzles must be fitted directly to the hose hand-grip or on the extension tubes.

Both nozzles can be used coupled with the set of circular brushes (Fig. 18) (shown next to an optional long straight nozzle).

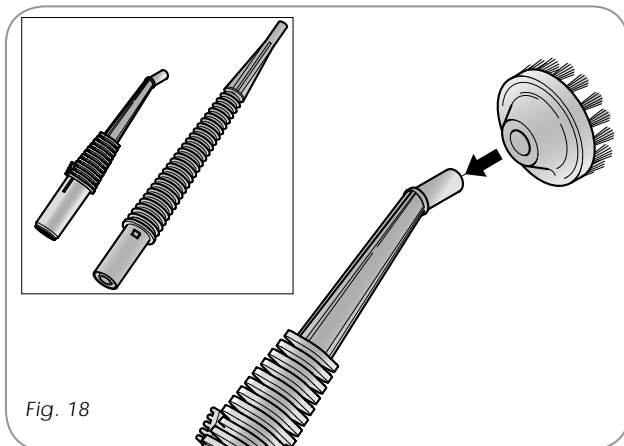


Fig. 18

CIRCULAR BRUSHES

Circular brushes are used to obtain better cleaning by combining the mechanical strength of bristles with the heat and strength of steam.

They can be used with both short nozzles and the long lance (optional) (Fig. 18-19)

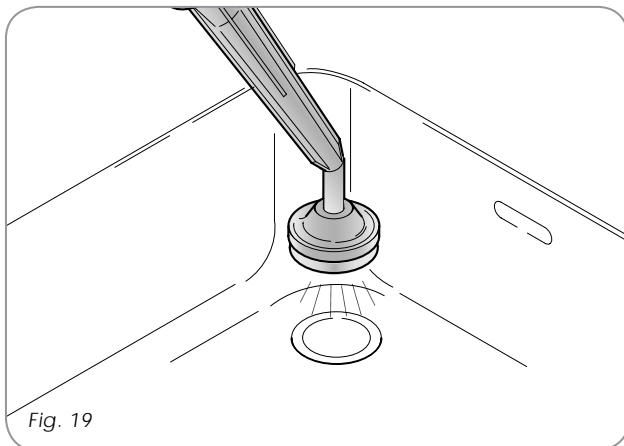


Fig. 19

CIRCULAR BRUSH- NYLON BRISTLES 1" or 2.5"

To be used with the short cleaning lance with or without the extension tubes. Fit it on the lance by slightly pushing and rotating clockwise. It improves cleaning ability of the steam. Suitable to clean cooker tops, faucets and fittings, spaces between tiles, and baseboards, etc.

CIRCULAR BRUSH- BRONZE BRISTLES 1" or 2.5"

To be used for surfaces and points where more abrasion is required - Like: rust, paint residues, heavy scale residues, restaurant cooker tops, aluminum pans, etc.

VISIT: WWW.APEXSTEAM.COM

For cleaning hints, tips, techniques and videos

IMPORTANT

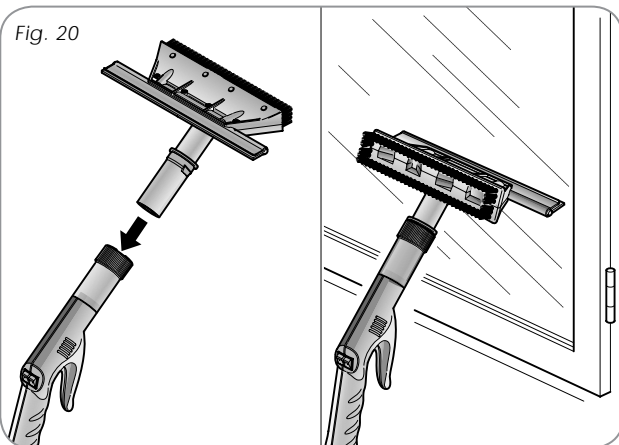
Only minimal pressure is needed on surface to be cleaned. It is the power of steam that cleans and sanitizes saving you effort & time.

**Window - Mirror attachment
(Good for any flat surface)**

This attachment is used to clean and wipe a surface.

It consists of a natural bristle brush and a silicone squeegee.

It can be directly fitted in the hose gun handle or in the extension tubes. (Fig. 20)

Fig. 20



8 - MAINTENANCE



All maintenance procedures are to be undertaken solely and exclusively with the machine cold and totally discharged of pressure WITH THE GAUGE READING "0" (Fig. 21).

This machine doesn't require much maintenance. However periodically it is necessary to empty the water out of the boiler to remove any lime scale deposits.

Loosen the cap on the base using the special tool supplied. Be sure to replace and tighten the cap once the tank is totally empty (Fig. 22).

In the event that the machine is to be used in areas in which the water is particularly rich in lime deposits, it is also advisable to clean the steam connection using a small screwdriver or similar item to CAREFULLY scrape away any lime deposits that may have formed inside (Fig. 23).

Fig. 21

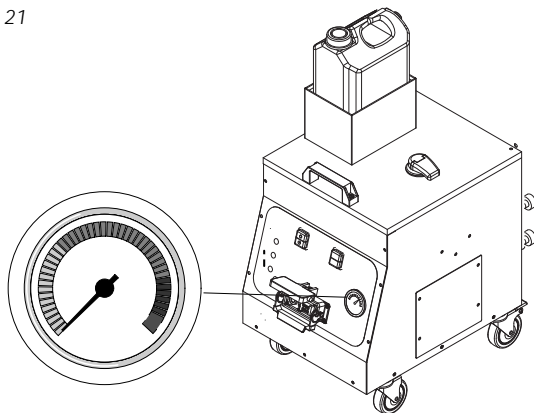
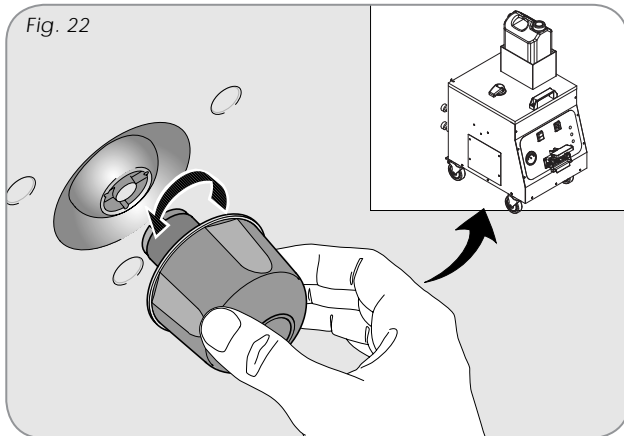


Fig. 22



MAINTENANCE DESCALING

(every 3-4 weeks)



ATTENTION:

Never descale the appliance when still warm.

- Unplug.
- Fill the boiler with a mix of 50% tap water and white vinegar ONLY!
- Heat the boiler to normal operating pressure.
- **THEN LET THE UNIT COOL COMPLETELY - MAKING SURE IT IS FREE OF PRESSURE!**
- Open the drain at the bottom of the tank (L) using the key on the safety cap.
- Empty the water from the tank.
- Rinse the boiler repeatedly with tap water (without adding other substances) until there are no further traces of scaling.
- Close the drain at the bottom of the boiler.



APEX STEAM TECHNOLOGIES
30 INDEL AVE · PO BOX 227 · RANCOCAS NJ · 08073
WWW.APEXSTEAM.COM
Phone: 609-267-0922 · Fax: 609-261-2546