



APEX1550



User Guide: USA





TABLE OF CONTENTS



Introduction page 3



Safety Instructions page 4



Disposal page 6



Technical Specifications page 7



Preparation and Use, START UP page 9



Operation pages 10 - 12



Accessories pages 13 - 15



Maintenance page 16



APEX STEAM TECHNOLOGIES
30 INDEL AVE · PO BOX 227 · RANCOCAS NJ · 08073
WWW.APEXSTEAM.COM
Phone: 609-267-0922 · Fax: 609-261-2546



BEFORE USE, CAREFULLY READ THIS MANUAL AND FOLLOW ALL SAFETY INSTRUCTIONS.



THE BOILER MUST BE DE-SCALED PERIODICALLY ESPECIALLY IN AREAS WHERE HARD WATER IS PREVALENT. SEE PAGE 19 IN THIS MANUAL FOR INSTRUCTIONS.

SYMBOLS



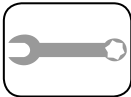
CAUTION: Important safety Instructions!



READ the entire user manual before start up



Before any maintenance, always **disconnect the power supply**.



Carefully follow the instructions for **maintenance** as described in the user manual



CAUTION: Machine is energized!



CAUTION: Hot parts!



CAUTION: Use protective gloves!



1 - INTRODUCTION



FOR YOUR SAFETY, PLEASE CAREFULLY READ THE INSTRUCTIONS BEFORE USING THE MACHINE AND FOLLOW THE GUIDELINES BELOW:

Please Read and Retain this Manual

Congratulations on choosing the APX1550. We are sure that if you carefully follow the information included in this manual, you will appreciate the quality of our product. Please carefully read this manual and have it read by anyone that will use this machine.

- The instructions concerning the operation and maintenance of the machine included in this manual describe the detailed use of the machine **ONLY** for its intended purpose.
 - This manual, provided with the unit must be **RETAINED FOR ANY FUTURE REFERENCE** until the machine is dismantled.
 - The manual must always be available to anyone operating the machine.
 - If the manual is lost or damaged, the user must ask the manufacturer for a new manual. Please Specify: **SERIES- MODEL- YEAR OF CONSTRUCTION- SERIAL NUMBER** as visible on the rear panel of the machine.
 - The manufacturer reserves the right to update and modify the generator without having to update the previous manuals.
- The manufacturer will not be responsible for any direct or indirect damage due to any improper use of the machine for example:
 - *Failure to perform required maintenance.*
 - *Any modification not authorized by the manufacturer.*
 - *Use of non-original spare parts and parts not specified for the model of machine.*
 - *Noncompliance with the instructions.*
 - *Extraordinary events or natural disasters*



THE BOILER MUST BE DE-SCALED PERIODICALLY ESPECIALLY IN AREAS WHERE HARD WATER IS PREVALENT. SEE PAGE 19 IN THIS MANUAL FOR INSTRUCTIONS.



2 - SAFETY AND WARRANTY



IMPORTANT. KEEP THIS USER MANUAL IN A SAFE PLACE FOR FUTURE REFERENCE.

This machine is designed and built for the sole purpose of cleaning and sanitation using steam.

IMPROPER USE:

Use for purposes other than specified above is considered as improper use. The machine must not be used in areas classified as potentially explosive. Refer to the section entitled "**Important Notes**" for further details. Full compliance with the operating and maintenance instructions is necessary. Improper use of the machine, besides being hazardous for the user and other people, will likely damage the machine and will void the warranty.

BEFORE OPERATION:

- Read the instructions carefully before operating the machine.
- Any use not in accordance with these instructions will void the warranty.
- The electrical installation must comply with ALL applicable laws and codes.
- **DO NOT** expose the machine to extreme temperatures. The operating temperature range is 41°F to 104°F.
- Before connecting the machine, make sure the main voltage corresponds to the voltage listed on the machines plate, and ensure the power outlet is grounded.
- Unplug the machine when not in use.
- Never leave the machine unattended when it is connected to the power supply.



ALWAYS DISCONNECT THE PLUG BEFORE ANY MAINTENANCE OPERATION.

- **DO NOT** pull on the power cord to disconnect the plug. Always grasp the plug.
- **DO NOT** allow the cord to get twisted, crushed or stretched.
- **DO NOT** allow it come into contact with sharp items or heated surfaces.
- **DO NOT** use the machine if the power cord or other important parts are damaged.
- **DO NOT** use extension cords as this could cause damage or a fire.
- If the power cord needs to be replaced, contact **APEX STEAM**.
- Never touch the machine with wet hands or feet when it is plugged in.
- **DO NOT** use the machine in the vicinity of sinks, baths, showers or other areas of water.
- Never immerse the machine, cord or plug in water or other liquids.
- **DO NOT** use the machine in places where there is the risk of explosion.
- **DO NOT** use the machine in the presence of toxic substances.
- **DO NOT** position the machine close to gas burners, rings, electric stoves or other sources of heat.
- Never allow the machine to be operated by children or anyone not specifically trained to do so.
- **DO NOT** press the buttons with excessive force.
- **DO NOT** use pen tips or other pointed instruments to press any buttons.



- Always use the machine on a flat, stable surface.
- If the machine shows any signs of damage, refrain from using it and have it checked at an Authorized Service Center.
- In the event of a fault or malfunction, switch the machine off immediately. **DO NOT** attempt to repair. Contact an Authorized Service Center.
- Original spares must always be used for repairs or replacements. This is to ensure the machine continues to operate safely.
- Before filling with water, remember to switch off the machine and disconnect the power plug.
- Make sure the machine is kept horizontal during operation.
- **DO NOT** direct the jet of steam towards electrical or electronic equipment.
- Let the machine cool down before cleaning it.
- Make sure the machine has cooled before storing.
- The safety devices must only be replaced by an Authorized Technician.
- Never direct the jet of steam towards people, animals or debris.
- Keep your hands clear from steam output.
- **DO NOT** place detergent or other chemical substances inside the boiler.
- Water contains magnesium, mineral salts and other substances that can lead to the formation of scale. Your boiler must be descaled periodically. See page 19.



WEAR SAFETY GOGGLES AND PROTECTIVE CLOTHING.

- This machine is not suitable for use by children.
- Children must not play with the machine.
- **CORRECT USE OF THE MACHINE:**

This machine is intended for domestic use as a steam generator in accordance with the instructions provided in this handbook. Please read the instructions carefully and keep the handbook in a safe place for future reference. The **MANUFACTURER & DISTRIBUTOR DECLINE ALL LIABILITY** for damage or injury caused by failure to use the machine in accordance with these instructions.



THE BOILER MUST BE DE-SCALED PERIODICALLY ESPECIALLY IN AREAS WHERE HARD WATER IS PREVALENT. SEE PAGE 19 IN THIS MANUAL FOR INSTRUCTIONS.



3 - DISPOSAL



This machine must be disposed of in accordance with any federal, state or local laws that pertain to the disposal of electric and electronic appliances, or pressure vessels.



4 - TECHNICAL SPECIFICATIONS

• DESCRIPTION OF THE MACHINE:

This industrial high pressure and high temperature electric steam generator is designed for cleaning and sanitizing multiple surfaces and a variety of equipment.

It can generate dry saturated steam at very high temperature for a deeper and more effective cleaning. This steam generator can also provide dry saturated steam mixed with hot water, thanks to a brand new design.

The many accessories included allow for easy use of the machine for cleaning a variety of items and areas.

• MACHINE SAFETY FEATURES:

- Pressure relief valve
- Pressure gauge
- Safety thermo-regulator/temperature control

DESCRIPTION		
MODEL	APX1550 120V	APX1550 220V
CODE	IND0310	IND0310
STAINLESS STEEL 304 STRUCTURE	YES	YES
POWER SUPPLY V/HZ	110/60	220/60
POWER WATTS	1650	2000
AMPS A	14	10
WORKING PRESSURE (ADJUSTABLE) PSI	100	100
WORKING TEMP °F	338	338
STAINLESS STEEL 316 BOILER CAP GAL	0.58	0.58
STEAM HOSE LENGTH FT	10	10
OUTPUT STEAM VOLUME LB/HR	8.8	9.5
CAPACITY OF WATER TANK GAL	1.32	1.32
CAPACITY OF DETERGENT TANK GAL	1.32	1.32
ELECTRONIC CONTROLS	YES	YES
POWER CORD LENGTH INCHES	15	15
LENGTH (WITH HANDLE) INCHES	24	24
WIDTH INCHES	15	15
HEIGHT (MACHINE ONLY) INCHES	21	21
HEIGHT (WITH HANDLE) INCHES	40	40
NET WEIGHT LB	45	45
GROSS WEIGHT LB	60	60
STANDARD ACCESSORY RACK INCLUDED	YES	YES



WHATS INCLUDED WITH THE APX1550



REF.	PART #	DESCRIPTION	QTY.
A	APX15501 APX15502	APX1550 (120V) STEAM CLEANER (15" POWER CORD & PLUG) APX1550 (220V) STEAM CLEANER (15" POWER CORD & PLUG)	1
B	APX15503	STEAM GUN WITH 10FT FLEX HOSE	1
C	APX00001	FILLER BOTTLE, NON-SPILL	1
D	APX00002	19" EXTENSION TUBES (SET OF 2)	1
E	APX00003	RECTANGULAR MULTI-FUNCTION BRUSH ATTACHMENT	1
F	APX00004	TRIANGULAR BRUSH ATTACHMENT FOR PADDED PRODUCTS	1
G	APX00005	WINDOW SQUEEGEE & BRUSH ATTACHMENT	1
H	APX00006	BLACK NOZZLE ATTACHMENT	1
I	APX00008	GREY NOZZLE ATTACHMENT	1
J	APX00009	DRAIN TOOL ATTACHMENT	1
K	APX00010	RECTANGULAR PILLOW INSERT	1
L	APX00011	TRIANGULAR PILLOW INSERT	1
M	APX00013	1" CIRCULAR NYLON BRUSH (RED)	3
N	APX00014	1" CIRCULAR BRONZE BRUSH (GREY)	3
O	APX00015	1" CIRCULAR STAINLESS STEEL BRUSH (GREY)	3
P	APX00017	2.5" CIRCULAR NYLON BRUSH (RED)	1
Q	APX00018	2.5" CIRCULAR BRONZE BRUSH (GREY)	1
R	APX00020	2.5" CIRCULAR PAD HOLDER (BLACK)	1
S	APX00023	WHITE TERRY CLOTH TOWELS (SET OF 6)	1
T	APX00027	SCRUBBING PADS, ASSORTED (SET OF 12)	1
U	APX00373	CAP FOR WATER RESERVOIR	1

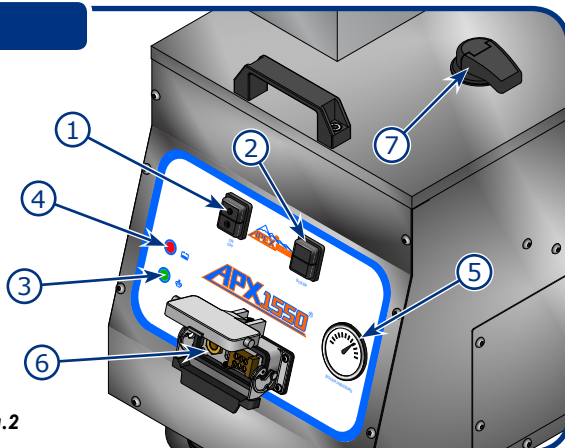
REPLACEMENT PARTS AND ACCESSORIES ARE AVAILABLE AT WWW.APEXSTEAM.COM



5 - PREPARATION AND USE

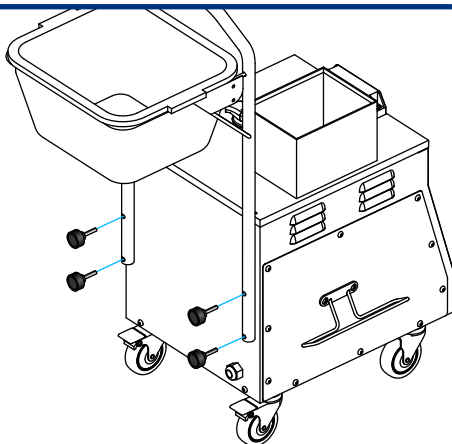
MAIN CONTROLS:

- 1 - Main ON/OFF Switch
- 2 - Boiler ON/OFF Switch
- 3 - Steam Ready Light (Green)
- 4 - Low Water Light (Red)
- 5 - Pressure Gauge
- 6 - Steam Gun Connection
- 7 - Water Tank / FILL CAP

Fig.2

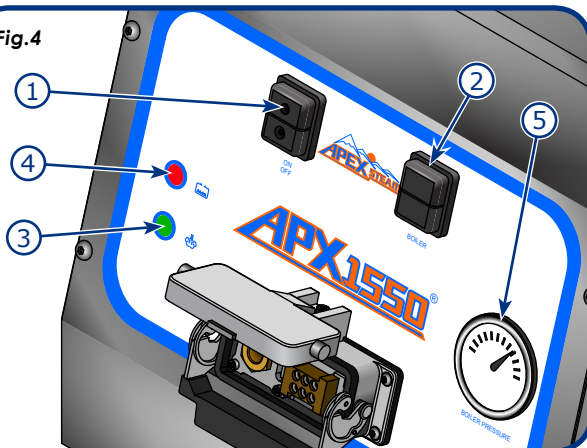
HANDLE INSTALLATION:

Attached the push handle to the cabinet's rear, using the mounting bolts provided.
(See Fig.3)

Fig.3

START-UP:

- ☞ Turn ON the Main ON/OFF Switch (1-Fig.4).
- ☞ Turn ON the Boiler ON/OFF Switch (2-Fig.4).
- The Green Steam Ready Light (3-Fig.4) will turn ON when the operating pressure is reached.
- The operating pressure is visible on the Pressure Gauge (5-Fig.4).
- If the Water Tank is low on water, the Red Low Water Light (4-Fig.4) will flash and beep.
- ☞ the Red Low Water Light (4-Fig.4) will turn OFF when the water tank is filled with water, and then normal operation will continue

Fig.4



6 - OPERATION

FIRST FILL-UP:

- If the boiler and tank are completely empty, all system functions are disabled.
- Check for water in the tank, and fill it if empty.
- With the tank full and the boiler empty, the system will activate the water pump to fill the boiler to the correct level. During this phase the heater is deactivated.



IMPORTANT!
WHEN THE RED “WATER TANK EMPTY” LIGHT COMES ON, NO MORE STEAM WILL BE DELIVERED UNTIL THE TANK HAS BEEN REFILLED.



IMPORTANT!
DO NOT USE DISTILLED OR DE-MINERALIZED WATER.

REFILLING BOILER:

- Refilling is carried out each time the level probe senses a low water level in the boiler. During water level recovery, the heater remains enabled for heating.



IMPORTANT!
USE THE STEAM GUN TO DISCHARGE ANY RESIDUAL AIR IN THE BOILER DURING INITIAL HEATING CYCLE. THE BOILER.

ON-BOARD WATER TANK:

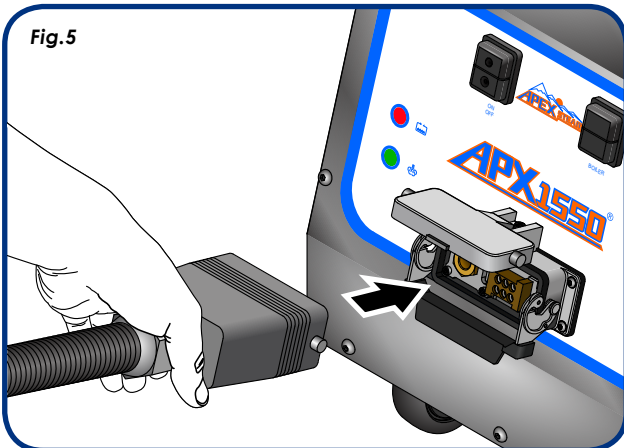
- Each time the WATER TANK level probe senses a low water level, the boiler immediately stops operation and the signal light (4 fig.3) starts blinking together and an intermittent audible signal is triggered.
- To reset the alarm, switch off the machine and disconnect the plug. THEN refill the tank to reset the alarm.



THE BOILER MUST BE DE-SCALED PERIODICALLY ESPECIALLY IN AREAS WHERE HARD WATER IS PREVALENT. SEE PAGE 19 IN THIS MANUAL FOR INSTRUCTIONS.



Fig.5



Open the cover of the Steam Gun Connection on the machine's front panel; insert the Steam Gun Connector, making sure that it is properly aligned and firmly connected. (See Fig.5)



NEVER use the steam hose to pull the machine. (See Fig.6)

Fig.6

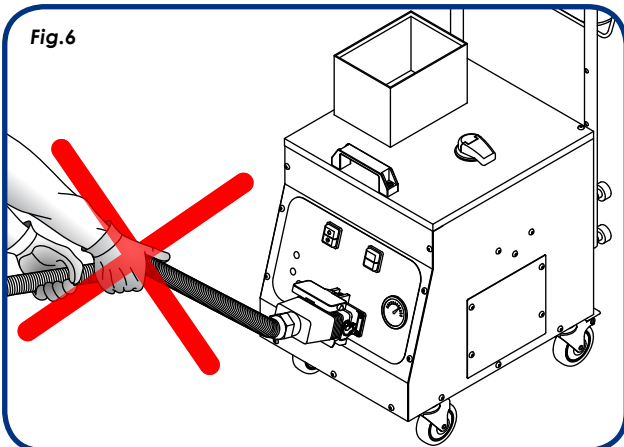
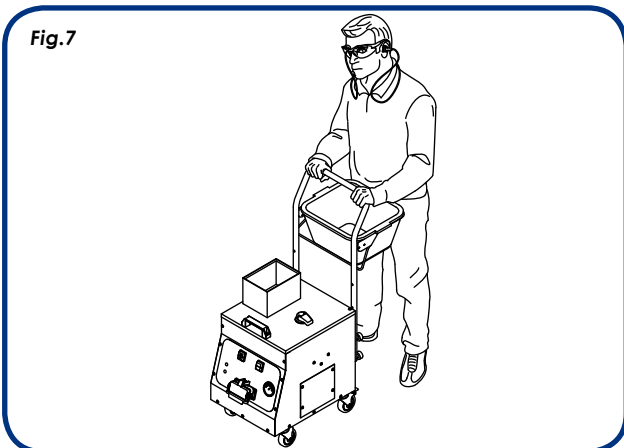


Fig.7



To move the machine, push from the back using the handle. (See Fig.7)



All the accessories provided can be attached simply by inserting the two ends.

(See Fig.8)

Listen and feel for a "click"

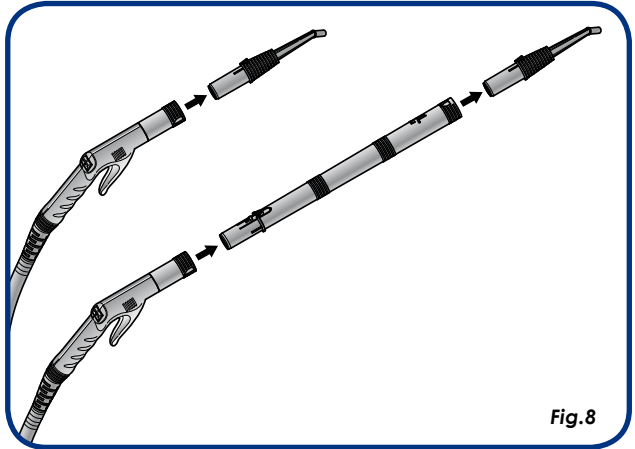


Fig.8

STEAM CONTROL:

☞ Choose the steam power level by pressing the Steam Button (1-Fig.9).

- Press **1x** for **LOW**
- Press **2x** for **MED**
- Press **3x** for **HIGH**
- Press **4x** to cycle **OFF** again.

☞ After selecting a power level, activate or deactivate the steam jet by pressing or releasing the Steam Gun Trigger (3-Fig.9).



To avoid burns, **NEVER** direct the steam jet towards people or animals.

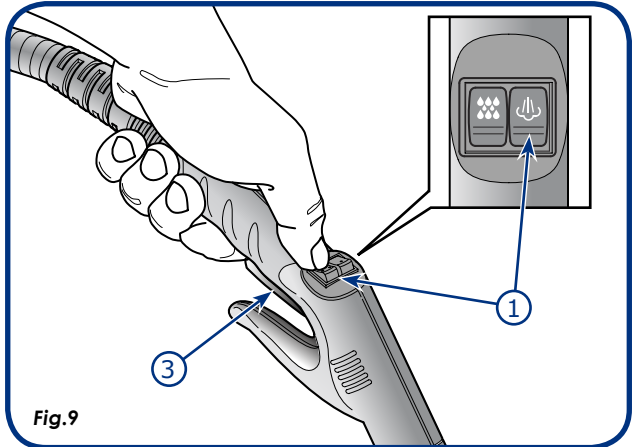


Fig.9

STEAM/HOT WATER CONTROL:

☞ To activate hot water injection, press and hold the Hot Water Button (2-Fig.10), while pressing the Steam Gun Trigger (3-Fig.10).

(Can only be used on **medium** or **high** steam power levels)

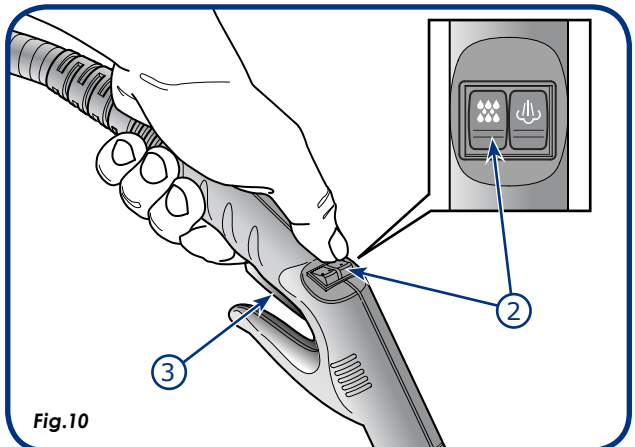


Fig.10



7 - ACCESSORIES

MOUNTING ACCESSORIES:

All the accessories provided can be attached simply by inserting the two ends.

(See Fig.8)

Listen and feel for a "click"



Fig.8

BRUSHES:

Brushes can be fitted into the steam gun directly or through the extension tubes.

RECTANGULAR BRUSH:

The Rectangular Multi-Function Brush can be used to clean floors and other large flat surfaces.

This brush is equipped with a lever allowing the handle to move and rotate. (See Fig.11)

The 4 clamps on the top of the brush allow a cloth to be securely attached.

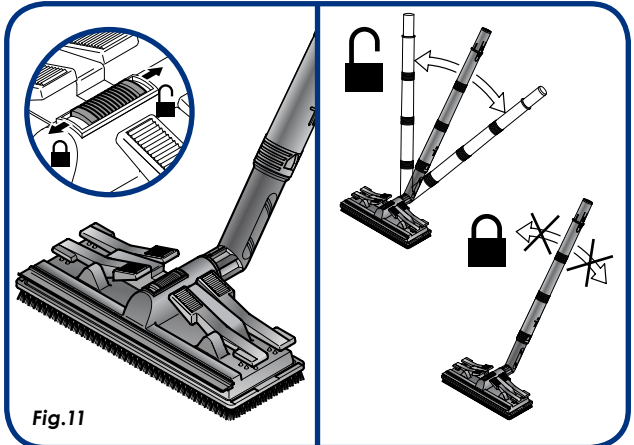


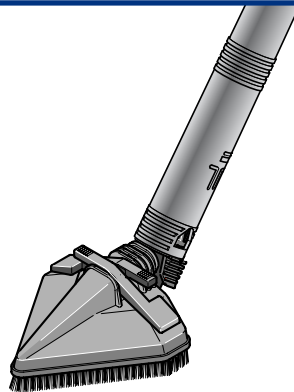
Fig.11

Fig.12

TRIANGULAR BRUSH:

The Rotating Triangular Brush has softer, more flexible bristles. (See Fig.12)

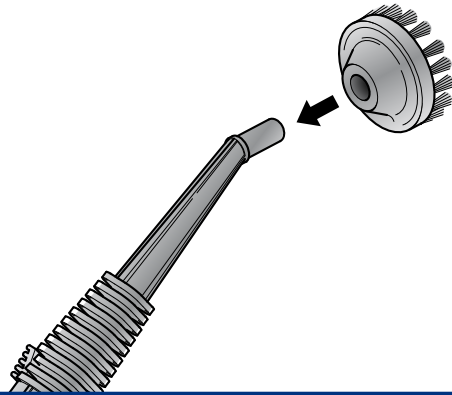
This brush is used to clean smaller and delicate surfaces like armchairs, fabrics, pleats and seams in fabrics.



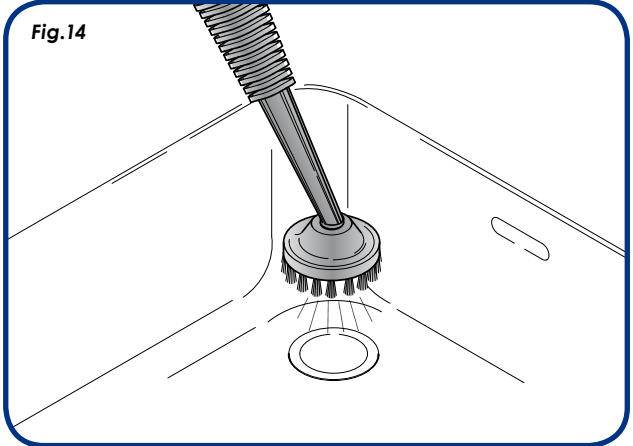
LANCES:

The Black or Grey Nozzle can be fitted into the steam gun directly or through the extension tubes.

Your choice of Circular Brush can be fitted onto either Nozzle. (See Fig.13).

Fig.13**CIRCULAR BRUSHES:**

Circular brushes are used to obtain better cleaning by combining the mechanical strength of bristles with the heat and strength of steam. (Fig.13-14).

Fig.14**CIRCULAR BRUSH- NYLON BRISTLES 1" OR 2.5":**

To be used with the short cleaning lance with or without the extension tubes. Fit it on the lance by slightly pushing and rotating clockwise. It improves cleaning ability of the steam. Suitable to clean cooker tops, faucets and fittings, spaces between tiles, and baseboards, etc.

CIRCULAR BRUSH- BRONZE BRISTLES 1" OR 2.5":

To be used for surfaces and points where more abrasion is required - Like: rust, paint residues, heavy scale residues, restaurant cooker tops, aluminum pans, etc.

VISIT: WWW.APEXSTEAM.COM:

For cleaning hints, tips, techniques and videos.

IMPORTANT:

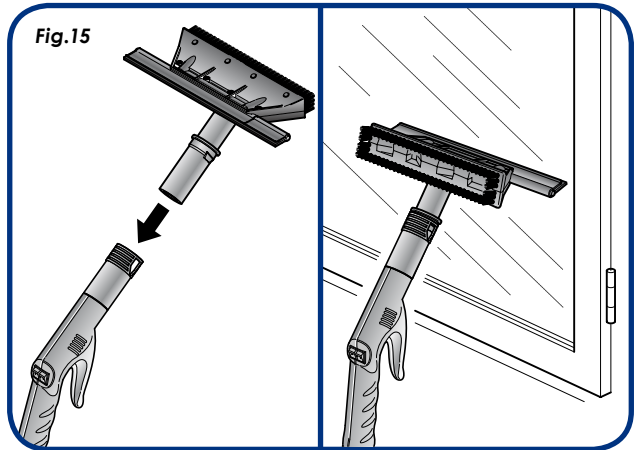
Only minimal pressure is needed on surface to be cleaned. It is the power of steam that cleans and sanitizes saving you effort & time.

SQUEEGEE ATTACHMENT:
(Good on any flat surface)

This attachment is used to clean and wipe any flat surface. (Windows, Mirrors, etc.)

It consists of a natural bristle brush and a silicone squeegee.

It can be fitted into the steam gun directly or through the extension tubes. **(See Fig.15)**





8 - MAINTENANCE



All maintenance procedures are to be undertaken solely and exclusively with the machine cold and totally discharged of pressure with the gauge reading "0" (See Fig. 16)

This machine doesn't require much maintenance. However periodically it is necessary to empty the water out of the boiler to remove any lime scale deposits.

Remove the Drain Safety Cover to expose the Drain Plug; then turn the Drain Plug counter-clockwise to open. (See Fig.17)

In the event that the machine is to be used in areas in which the water is particularly rich in lime deposits, it is also advisable to clean the steam connection using a small screwdriver or similar item to CAREFULLY scrape away any lime deposits that may have formed inside.

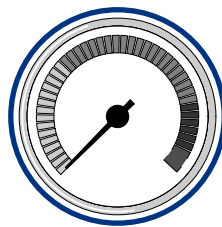


Fig.16

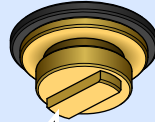
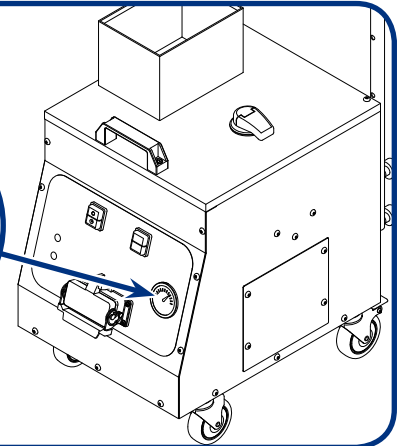
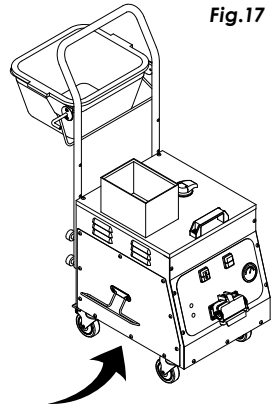


Fig.17



MAINTENANCE DESCALING: (Every 3-4 weeks)



Never descale the machine while it is still warm.

- Unplug.
- Fill the boiler with a mix of 50% tap water and white vinegar only!
- Heat the boiler to normal operating pressure.
- **! THEN LET THE UNIT COOL COMPLETELY - MAKING SURE IT IS FREE OF PRESSURE!**
- Open the drain at the bottom of the machine turning it counter-clockwise.
- Empty the water from the tank.
- Rinse the boiler repeatedly with tap water (without adding other substances) until there are no further traces of scaling.
- Close the drain at the bottom of the boiler.



APEX STEAM TECHNOLOGIES
30 INDEL AVE · PO BOX 227 · RANCOCAS NJ · 08073
WWW.APEXSTEAM.COM
Phone: 609-267-0922 · Fax: 609-261-2546